

# the Friends of Loring Park

2023 Fall

Volume 26, No. 2

## President's Message

### The gardening season draws to a close, Berger Fountain moves ahead slowly, and...pickleball!

Recent rains have brought some much-needed relief, but we've had two summers in a row with challenging drought conditions. Don't miss Lee Frelich's article on page 2 about the new tree species being selected for their ability to handle these new weather patterns. This summer Loring Park's gardener, Andy Haberman, watered constantly, trying to keep the gardens vibrant. Todd Miller did the same for the West Circle Garden and the small triangle garden at the 15th Street entrance. (Todd even waters the rose garden in the horseshoe courts that I tend--thank you, Todd!) Without their efforts, the gardens would not be anywhere near as beautiful.

The new volunteer gardening program that Andy and Park Board Horticulturist Kait Ryan developed this year was well received. You can read more in Bill Tresch's update on page 3.

Great news! Two pickleball courts are under construction on the south side of the tennis courts. The hard surface is down and is currently curing, after which they will be striped. The courts will be ready for pickleball players in the spring.

The Community Garden plot applications period for next spring is open. These sunny spots near the horseshoe courts fill up quickly. The deadline is February 15, 2024. To apply, go to [tinyurl.com/2024plot](https://tinyurl.com/2024plot).

Now for the bad news. There is a revised longer timeline for the Berger Fountain reconstruction project. The Berger Fountain Task Force will receive more refined cost estimates for fountain reconstruction and construction of the new plaza at the October 16, 2023 Task Force meeting. We have been waiting for these figures so that we know what the community fundraising goal will be. We will then begin the final big push to raise the necessary funds with the hope that construction can start in the spring of 2025.

I hope you got out to enjoy the recent rains!

*David Hile*

—David Hile, Friends Board President

*P.S. The final volunteer gardening day for the season is Saturday, October 14, 2023. We'll end the season with a celebratory lunch, and hope to see you there!*

## Loring's Berger Fountain project moves ahead to next phase

The Minneapolis Park and Recreation Board (MPRB), in partnership with the Berger Fountain Task Force, is planning to rebuild Berger Fountain in Loring Park. The Berger Task Force consists of representatives from Citizens for a Loring Park Community, Friends of Loring Park and Loring Greenway Association.

More than 1,000 people weighed in through two phases of engagement to help decide on a final design which met community needs and budget constraints. Both phases of engagement consisted of an online survey, focus groups, and pop-up tabling in Loring Park with community partners.

A proposed final design for the project debuted August 1 at National Night Out in Loring Park. Thank you to everyone who took time to share ideas and opinions about the fountain and the surrounding area of Loring Park.

Next steps for the project include completing design development, final design and construction documents phases, with construction planned as early as the spring of 2025. (Information continues on page 6.)

**What's next? You can see all the details and stay up to date on the Berger Fountain Task Force site: [loringpark.org/berger-fountain](https://loringpark.org/berger-fountain).**

*This article was adapted from the Citizens For A Loring Park Community mid-September newsletter.*

### Berger Fountain Design Details

- Restores the fountain in the same location, with the same size and cascading pools
- Illuminates fountain and pools at night with decorative lighting
- Creates new triangular plaza area around the fountain
- Adds seating, gathering space
- Adds flower planters to separate plaza from street
- Improves connection to Loring Greenway entrance
- Installs permeable paving to protect tree roots
- Retains all of the existing nearby trees

# Diversifying Loring Park's Urban Forest

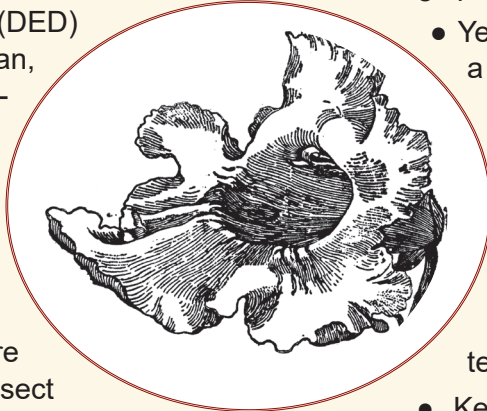
Maintaining the urban forest has been a challenge in recent years, with all of the pests and diseases that have been brought to North America.

For example, Dutch elm disease (DED) which infects our native American, red and rock elms, and the emerald ash borer that infests our native white, green and black ash trees. Now, a warmer climate with the more severe droughts that we have had during the summers of 2021, 2022 and 2023, and more severe storms are facilitating even more invasive insect pests, presenting a challenge for urban foresters. The urban heat island makes the Twin Cities Metro area 3-5 degrees warmer than surrounding rural areas, adding to the impacts of a warming climate. Further problems for urban trees are caused by deicing salt which can kill roots or buds on the twigs of trees, compacted soil, and small spaces with limited rooting or growing space.

The solution to this complex of problems is to plant a variety of tree species that can deal with all of the urban and climatic stresses mentioned above. In the early- to mid-1900s, tree plantings consisted mainly of American elm. After Dutch elm disease arrived in the 1970s diversification of the urban forest started, with species of ash, linden (also called basswood), maple, honey locust, hackberry and oak added to the planting list. Those species are still being planted, and in fact there are more species and/or varieties of them being planted to increase genetic diversity. However, today's planting list for the Minneapolis Park and Recreation Board (MPRB) Forestry Department is even more diverse. It includes a number of species that were rarely planted in the past, and some that are probably new to most Minneapolis residents. Here are a few notable species that are appearing in Loring Park and on boulevards in the surrounding neighborhoods:

- Amur maackia (*Maackia amurensis*)—a small deciduous tree with pinnate compound leaves with opposite leaflets and white flowers in upward spikes (these two characteristics distinguish it from yellowwood). It is from the Amur River region in

northeast China, adjacent to Russia and Korea, and is suitable for planting in areas with limited rooting space or limited height.



- Yellowwood (*Cladrastis kentukea*)—a medium-sized deciduous tree native from Arkansas to Kentucky and Tennessee, with pinnate compound leaves with alternate leaflets. It has white dangling flowers in spring and peapod-sized fruits in late summer. I am amazed that it survives the winters in Minneapolis.

- Kentucky coffeetree (*Gymnocladus dioica*)—a medium-to-large deciduous tree with double compound leaves. Although its main range lies across Missouri, Illinois and Indiana, it is native in a few places in southern Minnesota. It produces flat bean pods usually with 4-6 large seeds, which are poisonous unless roasted; although the resulting coffee is reportedly not very good. This tree is very tolerant of urban conditions and has become one of the most commonly planted species by MPRB Forestry in recent years.

- Northern catalpa (*Catalpa speciosa*)—a medium-to-large sized deciduous species native to a small area in southern Illinois and adjacent states. It has been planted in Minneapolis in small numbers since the mid-1900s, but is now one of the species most commonly planted by MPRB Forestry. It has very large heart-shaped leaves, and white flowers in spring which produce round 'bean pods' that hang from the trees in late summer and autumn.

There are also other species such as Turkish filbert (a type of hazelnut tree), shagbark hickory (native just south of the Twin Cities), and oaks native to the south of Minneapolis, such as chinkapin oak, scarlet oak, and shingle oak, that are being planted in small numbers, and if successful, could become more common in our urban forest in the future. These new species are adapted to a warmer climate and will help to maintain our urban forest in an uncertain future.

—Lee Frelich, Director,  
University of Minnesota Center for Forest Ecology

Now You Can Donate Online: [Click Here](#)

## Loring Park Profile Red Bryant



*Red Bryant, MPRB Outdoor Facilities Supervisor, is a familiar and friendly face around the park.*

I recently had the good fortune to chat with Loring Park’s Cynthia “Red” Bryant. Red has been the MPRB outdoor facilities supervisor for eight years, engaging with and helping anyone and everyone she encounters in Loring Park.

Born in Minnesota, she is African American and Native—her mother gave her the nickname she’s almost universally known by: “Red.” She attended Patrick Henry High School, and attended Minneapolis College (previously known as MCTC) before attaining her Associate of Arts degree from St. Paul College. For twenty years Red served as dean of Minneapolis’s Alternative High School.

Red and her spouse just celebrated their fifteenth anniversary, and they have a 31-year-old son and four grandchildren.

Red recently retired after twenty-five years with the Minnesota Vixen professional football team as a defensive tackle. She’s watched with pride as the

number of women’s football teams has gone from one to more than sixty. In 2018, Red was inducted into the inaugural class of the Women of Football Hall of Fame in Las Vegas.

Asked what her favorite element of Loring Park is, she spoke about the diverse public engagement she has on the job on any given day, and the dynamic mix of people who—like her—truly enjoy the park.

When asked what she would improve or change about Loring Park if she could make it happen with a snap of her fingers, she cited misconceptions about some of the everyday people she encounters. She believes that whether rich or poor, addicted or not, a nearby resident or a homeless person, we all deserve grace. She believes that Loring Park is a beautiful place where all humanity can live and let live.

We’re proud of Red for all she does, and are grateful to call her a Friend of Loring Park.

*—Todd Miller, Friends Board Member*

## Our Community Garden: the Garden of the Seasons

Either it feels like the garden has always been there, or you can’t believe so much time has passed. Twenty-six years ago, the Garden of the Seasons was installed through the efforts of the Friends of Loring Park, at that time a newly formed non-profit spun off from Citizens for a Loring Park Community (CLPC). Utilizing a grant from the Neighborhood Revitalization Program (NRP), the Garden of the Seasons was designed and installed as a collaboration between the community and the Park Board. The garden was a direct engagement and expression of community to aid in creating a safe and beautiful Loring Park. Built on the site of a former shuffle ball court, new soil (as specified by Lee Frelich) was trucked in, and the circular brick walkways were installed. A color wheel planting pattern was designed for the outer rings, and a native woodland garden created for

its center. The Park Board provided a gardener to maintain and develop the garden, and the community provided input and helped through monthly gardening opportunities.

Twenty-six years later, the Garden of the Seasons has weathered and evolved through many changes. Six different MPRB gardeners have brought new skills and insights; droughts and politics have had their effects. Trees at the garden’s center died, and replacements have been installed. The pressures of an urban setting are forever having an effect, but the garden remains both a constant and a work in progress.

This year, gardening days have taken on a new educational aspect, as specific projects have determined the morning’s activities. Andy Haberman, Loring Park’s MPRB gardener, has led with demonstrations and set focused tasks to be accomplished. We prepared a new garden bed and

installed shrubs at the Ole Bull statue and learned new pruning techniques and plant identification for thinning.

Throughout its ups and downs, its visual glories and struggles to find the perfect horticultural balance, the Garden of the Seasons remains a community garden, an ongoing site of community engagement and professional collaboration. On gardening days we are community: a group of neighbors and friends working together in the dirt, weeding, planting, thinning, dividing, looking. Working together we take care of our park, and we take care of our community. It seems important. It’s our Loring Park. We invite everybody to join the ongoing effort and pitch in.

Gardening Days are the second Saturday of each month. Starting May 10, 2024

*—Bill Tresch, Friends Board Member*

Please stay in touch! Email: [info@friendsofloringpark.org](mailto:info@friendsofloringpark.org) | Phone: 612-673-5395  
Website: [friendsofloringpark.org](http://friendsofloringpark.org) | Facebook: Friends of Loring Park on Facebook



## Unique Opportunities to Support Loring Park

### CONTRIBUTIONS

Friends of Loring Park acknowledges the following gifts, which were gratefully received March through September, 2023.

### GENERAL FUND

Mary L. Everett  
Shelly Franz  
Sherri Stuver  
Jim & Nancy Mikesh, in Memory of Tom Horner  
Thomas Johnson, in Memory of Nancy B. Miller  
Wood Foster-Smith  
Bennett Hoffman  
Eric Stults  
Andrea Fenton  
Mary Everett  
Linda Slarks  
Peter Cundall  
Sally & Jon Westby  
Lavonne Landsverk,  
in Memory of Irvin & Judith Landsverk  
Dick & Jan Sandberg  
Mark Dougherty  
John Kolander  
David D. Stewart & Jodi A. Martin  
S. Jones  
David Braslau  
Donald & Florence Ostrom  
Hope Esparolini  
Lori Capistrant, in Memory of Nancy Miller  
Robert Lindemeyer  
James Mullen  
Eric Eskola  
Marty Jones  
Stephen & Gay Russell-Dempsey  
Suzanne Edwards

### BERGER FOUNTAIN

Mark Nammacher  
Karen Bachman  
Elly Haidos, in Honor of Dennis Dillon's birthday  
James Castoff  
Jane & Ogden Confer  
Kathy Wood  
Andy Kiorpes, in Honor of Ms. Ann Adams  
Alice Lincoln  
Bill & Jerri Sudderth  
Randall Lundell  
Kathleen Humphries  
KM Schilling  
Ruth Crane  
Faythe Thureen in Memory of Gordon Thureen  
Linda Schelin  
Virginia Barzan Charitable Fund  
Theodore A. Park Trust  
Maureen Meier

*Continued next page*

The Friends of Loring Park works with the Minneapolis Park and Recreation Board to provide financial and volunteer support for Loring Park so that it will continue to serve the recreational and leisure needs of the public.

Friends offers three unique opportunities to honor, remember, or recognize a special person, event or place.

### Donate a Brick

to the Garden of the Seasons. The ongoing personalized brick campaign seeks to replace the asphalt outer walkway of the Garden of the Seasons with a beautiful brick pathway.

#### **\$75 donation—a 4x8 brick**

with three lines of print (14 characters and blank spaces per line)

#### **\$120 donation— 8x8 brick**

with six lines of print (12 characters and blank spaces per line)

*Special characters (bell, star, heart) are available for \$10 per symbol. Custom logos: call for quote.*



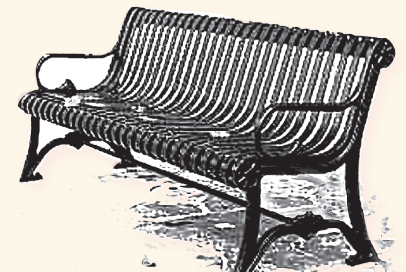
### Sponsor a Native Tree

Friends of Loring Park is working closely with the MPRB to support the master plan that will create a vibrant canopy of hardy native trees in Loring Park.

**\$500 donation**

### Dedicate a Bench

to a friend, a loved one, your company or family, or perhaps to remember a special event. Your dedication or message (up to 37 characters) can be forged on the cast iron armrest.



**Bench with personalization — \$3,000**

**Anonymous sponsorship — \$2,500**

Please consider a tax-deductible donation  
For further information,  
call 612-673-5395  
or visit [www.friendsofloringpark.org](http://www.friendsofloringpark.org)

# Support Loring Park Today!

**Yes! I'd like to support Loring Park with my tax deductible donation!**

**Bench Sponsorship: \$3000 with inscription, \$2500 without inscription**

Inscription - 37 characters including blank spaces:

-----  
-----

Bench is being donated \_\_\_in honor of \_\_\_in memory of :

\_\_\_\_\_

**4x8 Brick Donation: \$75.00**

**Inscription - 3 lines, 14 characters per line including blank spaces:**

-----  
-----  
-----

Brick is being donated \_\_\_in honor of \_\_\_in memory of:

\_\_\_\_\_

**8x8 Brick Donation: \$120**

**Inscription - 6 lines, 12 characters per line including blank spaces:**

-----  
-----  
-----  
-----  
-----  
-----

Brick is being donated \_\_\_in honor of \_\_\_in memory of:

\_\_\_\_\_

**Awakening Notecards (\$12.00 per 5 pack) Qty: \_\_\_ Total: \_\_\_**

**Loring Scenes Notecards (\$12.00 per 5 pack) Qty: \_\_\_ Total: \_\_\_**

**Loring Scenes Postcards (\$12.00 per 10 pack) Qty: \_\_\_ Total: \_\_\_**

\_\_\_\_\_

**To sponsor the trees or perennials for the park entrance improvements, please call 612 673-5395.**

**Your Name** \_\_\_\_\_

**Address** \_\_\_\_\_  
\_\_\_\_\_

**Telephone** \_\_\_\_\_ **E-mail** \_\_\_\_\_

*Please send notification of my gift to (name and address):*

\_\_\_\_\_  
\_\_\_\_\_  
\_\_\_\_\_

**Total Donation enclosed:** \_\_\_\_\_

Mail this form with your check to: Friends of Loring Park, P.O. Box 52074, Mpls, MN 55402

Alice Lincoln  
Robert Lindemeyer  
Edward P. Jones and Blair J. Setterlund  
Maryfaith Fox  
Joe Mullen  
Barbara A. Brown  
Elly Haidos for Beth Davis

## BRICKS

Allen Gooch & Mary Dow Rye  
Janis Horner, Bill & Julie Richmond  
in Memory of Tom Horner  
Kathryn & Rodger Ringham  
in Memory of Eliza Fisher  
Edwina Herzberg  
in Memory of Nicole Herzberg  
Roger W. Osborne  
Jeffrey Goetz,  
in Memory of Elizabeth Anderson  
Jenny & Steve Ramirez  
for Ian & Marigrace's wedding  
Michael Putman  
John Lancaster  
Jan Hoffman & Marion Veit  
in Memory of Marge & Duward Peterson  
Mary Sheehan in Memory of Tim Sheehan  
Diana Ursin for Precious Max

## TREES

Thomas & Kate Law  
Linda Petrick

## GARDENS

Gayle Henry in Memory of Randy Schulz

**Mission** The Friends of Loring Park was formed to develop financial and programming support for Loring Park. Its purpose is to implement the vision and master plan adopted by the Loring Park community and the Minneapolis Park and Recreation Board. The Friends of Loring Park, a tax-deductible Minnesota nonprofit organization, administers the Loring Park Restoration Fund.

|                            |                        |
|----------------------------|------------------------|
| <i>President</i>           | Jerry Amundson         |
| David Hile                 | Pat Davies             |
| <i>Vice President</i>      | Todd Miller            |
| Nicholas Deacon            | Joella Mosley          |
| <i>Treasurer</i>           | Mark Scally            |
| Richard Anderson           | Marcia Stout           |
|                            | Bill Tresch            |
| <i>Secretary</i>           |                        |
| Ede Holmen, <i>emerita</i> | <i>Past Presidents</i> |
|                            | Lee Frelich            |
|                            | Ione Siegel            |

*Administrative Assistant, Phyllis Roden*  
*Editing and Graphic Services, Tib Shaw*

Published by The Friends of Loring Park,  
a 501[c]3 organization



Friends of Loring Park  
 P.O. Box 52074  
 Minneapolis, MN 55402

## Upcoming Events

The trees and gardens may be going dormant soon, but Loring Park certainly isn't! Here are just a few upcoming events and activities to tempt you out of hibernation:

- Wander with a Naturalist October 19, 12:30 to 1:30 PM
- Howl-O-Ween Dog Costume Contest Oct. 20, 6 to 9:30 PM
- Gingerbread House Wonderland Dec 14, 6:30 to 8:30 PM

See MPRB's website for the full list of offerings, including book club, craft groups for all ages, sing-a-longs, bingo, cooking, snowshoeing, Holiday events and more. Most activities are free, but may require pre-registration.

Visit [minneapolisparcs.org](http://minneapolisparcs.org) or call 612-230-6400 for details.

## Morning Meditation

The outdoor meditation season is almost complete. Cooling temperatures and slower sunrises will soon urge us to call it quits. Temperatures colder than 42 degrees at 7:00AM will signal the end of another year of sitting in the park well done.

Starting in January, we'll be back together virtually on Zoom while we eagerly await our springtime return to the Garden of the Seasons and go through the cycle all over again. If you are interested in joining us on Zoom this winter, send a request to [info@friendsofloringpark.org](mailto:info@friendsofloringpark.org) for an invite. Otherwise, join us next spring. **We'll be back!**

### BERGER FOUNTAIN RESTORATION

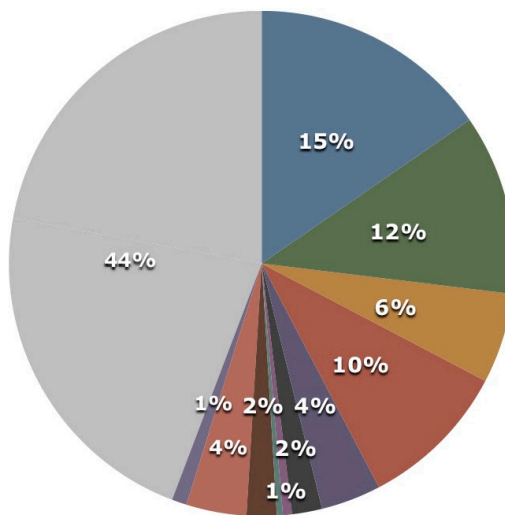


## Berger Fountain Fundraising Plan 2023

### BERGER FOUNTAIN RESTORATION

#### 2023-2024

Estimated GOAL - \$2.6 Million



- Park Dedication Fees - \$400,000
- NPP M & R Fees - \$300,000
- Park Enterprise Fees - \$150,000
- State of Minnesota - \$250,000
- 4 Large Donors - \$100,000
- Bench Sales - \$50,000
- Neighborhood Park Events/Pride - \$15,000
- Fundraising Events - \$10,000
- Merchandise Sales - \$50,000
- Individual Donations - \$100,000
- Text to Donate - \$25,000
- Berger Fountain Plaza Naming
- Other TBD - \$1,150,000

### TIMELINE

- 2021 - Berger Task Force meets monthly w/MPRB staff post COVID; Memorandum of Understanding updated between the Park Board & Berger Fountain Task Force
- 2022 - Feasibility Study completed by selected Consultant Damon Farber
- 2023 - Concept Design Study developed thru Community Engagement & 2017 MPRB Loring Park Master Plan/Berger Fountain section
- 2024 - Engineering Designs created & Fundraising Plan implemented
- 2024-2025 - Berger Fountain Restoration completed

**CITIZENS FOR A LORING PARK COMMUNITY**  
 For more information email:  
[LoveLoring2@gmail.com](mailto:LoveLoring2@gmail.com)

 FIND BERGER FOUNTAIN ON FACEBOOK!

 **FRIENDS OF LORING PARK**  
[www.friendsofloringpark.org](http://www.friendsofloringpark.org)